



塑寶®

耐酸鹼化學自吸式

SE 型機械軸封泵浦

SELF-PRIMING CHEMICAL PUMPS



SUPER PUMPS

MODEL IDENTIFICATION

型號說明

SE - 25	SK - 1/2	6	N	F - C	C	H			
1	2	3	4	5	6	7	8	9	10

- (1) Type機型編號-SE
(2) In-Outlet出入口徑
25 - 1" 40 - 1-1/2"
(3) Specific Gravity比重
SK-1.0 SP-1.3
(4) Power馬力
1/2 : 1/2 HP
1 : 1 HP
2 : 2 HP
- (5) Frequency頻率
5:50Hz 6:60Hz
(6) Elastomer橡膠材質
N-NBR.
E-EPDM.
V-VITON.
(7) PumpMaterial泵體材質
F-FRPP
K-PVDF
- (8) Fixed-Seal 固定環
C- Ceramic陶瓷
S- SSIC
(9) Rotational-seal轉動環
C-Carbon碳素
S-SSIC
(10) Bellows Spring彈簧
H-Hastelloy-C
S-SUS316

- 適用溫度：FRPP、PVDF 85℃以下，視各種化學性之不同而定。
 - 獨特的機械軸封設計：採用Teflon Bellows Seal自冷式設計，並有專利冷卻循環迴路，在空轉時會利用泵內部的液體循環冷卻機械軸封，軸封材質：SSIC, Carbon, Ceramic。
 - 自吸式設計：自吸力特強，依規格不同。
 - 抗腐蝕性：採用各種特殊塑鋼材質製成，有FRPP, PVDF可抵抗大部分的酸鹼液。

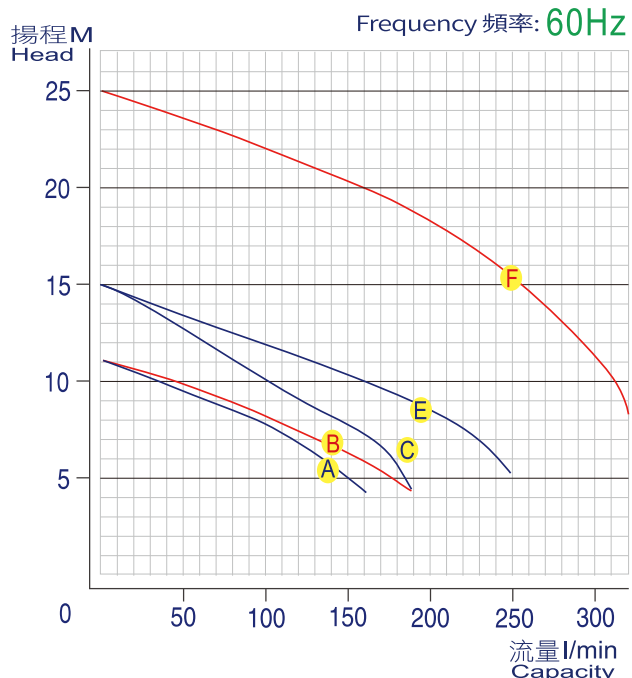
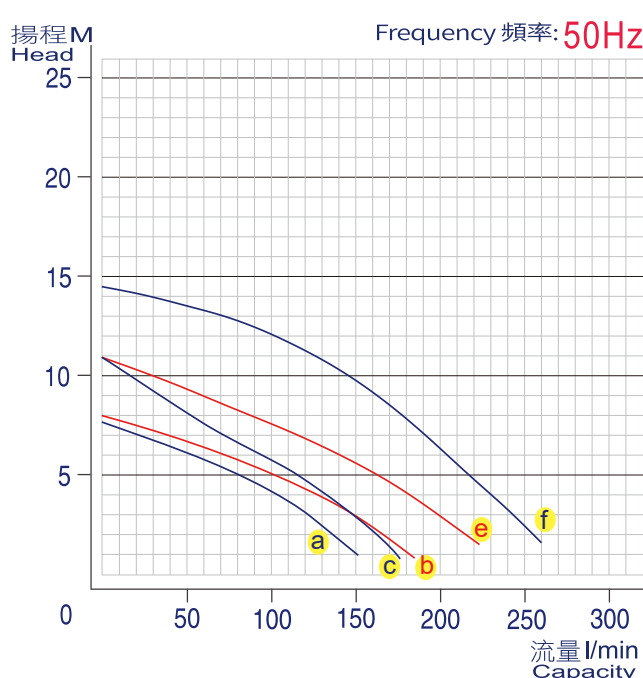
※中專實用新型第 ZL 98 2 05952.3 號專利
- Solution temperature: FRPP, PVDF Under 85°C, depending on the chemicals.
 - Unique chemical seal: Teflon Bellows Seal is a self-cooling, has patent of cooled recirculation. When idling solution in the pump will be cooled by recirculation.Seal Material: SIC, Carbon, Ceramic.
 - Self-priming: This series is capable of self-priming up to 20 feet of lift.
 - Excellent chemical resistance: Various special plastic such as FRPP, PVDF prevent the attack of most chemicals.

SPECIFICATIONS PERFORMANCE CHART

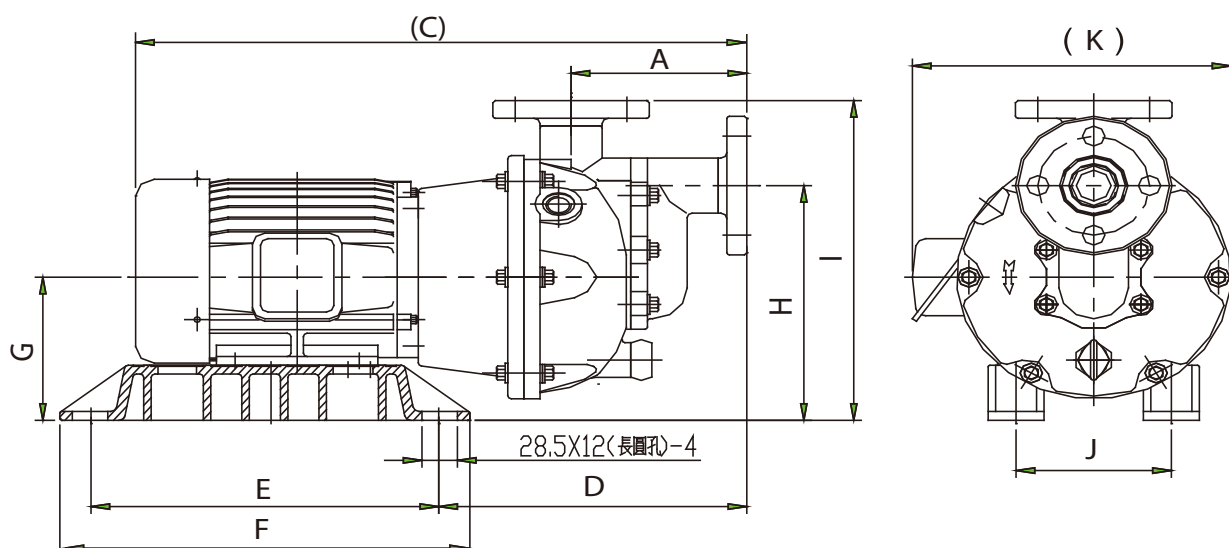
規格/性能曲線

- ※ 重量/性能以實物為準
Weight / Performance Is For Reference Only Actual Product May Vary
- (測試流體：水 比重1.0)
Test Fluid : Water Sp.Gravity 1.0

Model 型 式	In/Outlet 口徑 (mm)		Power 馬力			50HZ			60HZ			Weight 重量 kg
	In 入口	Out 出口	Phase 相數	HP	KW	Curve 曲線	Max.Head 全揚程 M	Max.Flow 全流量 L/min	Curve 曲線	Max.Head 全揚程 M	Max.Flow 全流量 L/min	
25SK-1/2	25	25	3ø	1/2	0.4	a	7.5	155	A	11	160	19
40SK-1/2	40	40	3ø	1/2	0.4	b	8	185	B	11	190	19
25SK-1	25	25	3ø	1	0.75	c	11	175	C	15	190	20
40SK-1	40	40	3ø	1	0.75	e	11	225	E	15	250	21
40SK-2	40	40	3ø	2	1.5	f	14.5	260	F	25	320	29



DIMENSIONS 外觀尺寸



※尺寸表 C/K 會因電機品牌不同而改變
Dimension May Vary With Different Brand Motor

Unit:mm

MODEL	Power	In/Outlet	A	C	D	E	F	G	H	I	J	K
SE-25SK-1/2	1/2HP(0.4kW)	25X25	125	505	240	280	330	130	213	281	125	270
SE-40SK-1/2	1/2HP(0.4kW)	40X40	125	505	240	280	330	130	213	276	125	270
SE-25SK-1	1HP(0.75kW)	25X25	125	505	240	280	330	130	213	281	125	270
SE-40SK-1	1HP(0.75kW)	40X40	125	505	240	280	330	130	213	276	125	270
SE-40SK-2	2HP(1.5kW)	40X40	125	535	240	280	330	140	223	286	140	280

MATERIAL 泵體材質



FRPP/綠色



PVDF/深咖啡

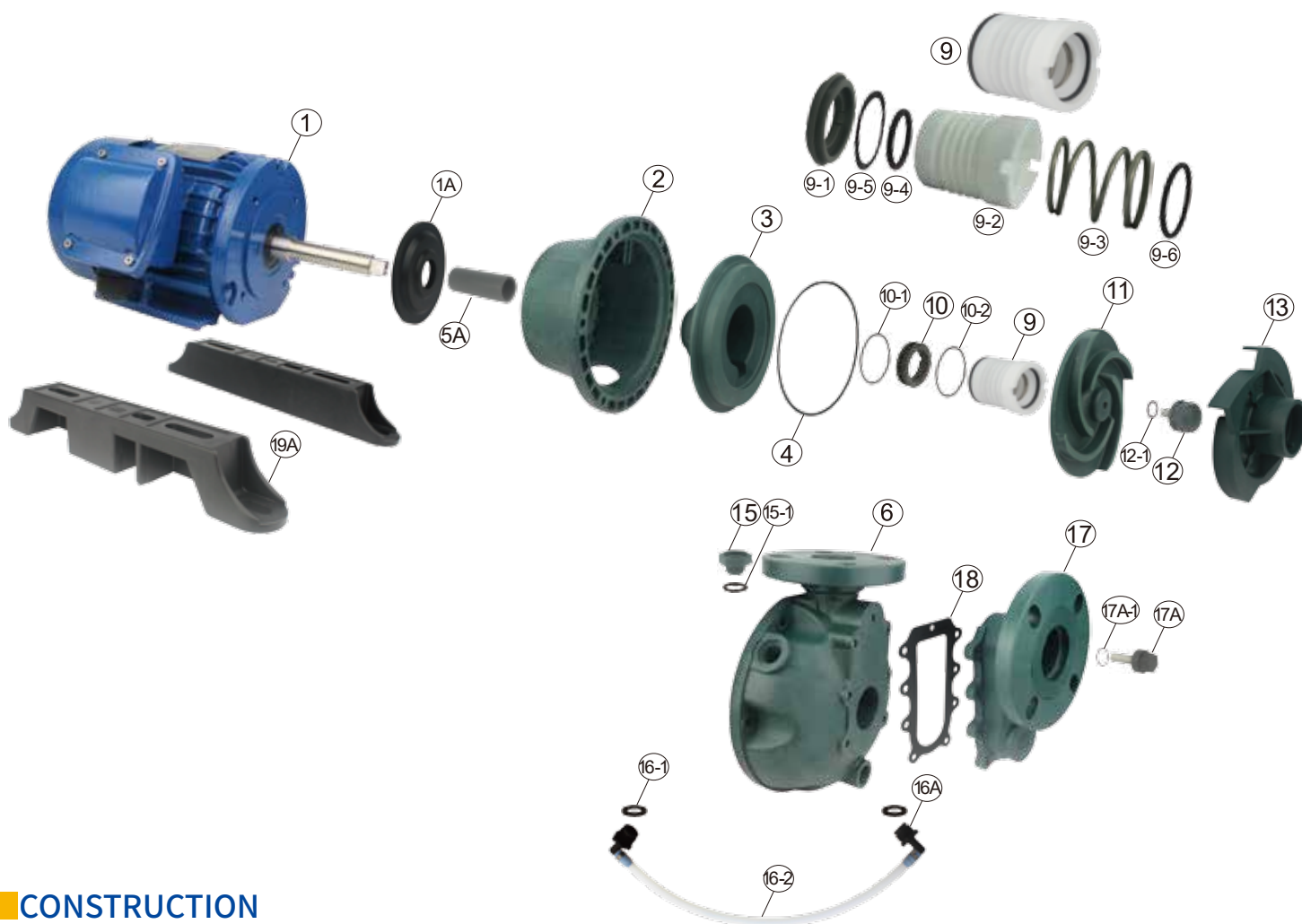
Various engineering plastic such as FRPP, PVDF, prevent most of chemicals corrosion, ensuring the perfect performance in different operation conditions.

各種不同的工程塑膠如FRPP·PVDF·可承受大部份的化學藥品，確保了於不同操作情況下的完美性能。



Cycling liquid cools the seal and prevents it from overheating while dry-running.

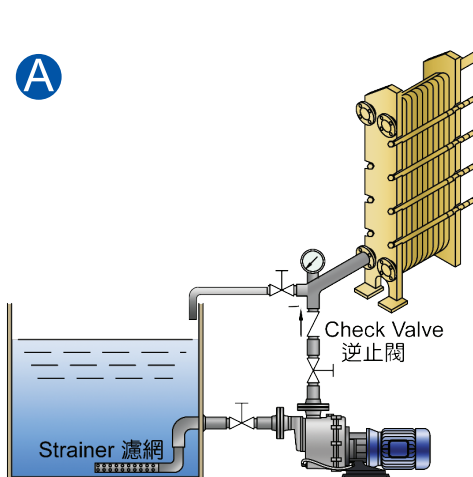
SE 系列於空轉時，泵浦內的液體會經由循環迴路冷卻軸封，防止其過熱損壞。



CONSTRUCTION 零件圖表

1 馬達 Motor  FC/Alu	1A 軸心甩圈 Oil-Seal  NBR / EPT VITON	2 接合座 Connected Seat  FRPP/PVDF	3 後封蓋 Rear cover  FRPP/PVDF	4 後蓋O環 Rear Cover O-ring  NBR / EPT VITON	5A 軸套 Shaft Sleeve  TEFLON	6 主體前蓋 Front Cover  FRPP/PVDF	9 前軸封 Bellows-seal combination 	9-1 轉動環 Rotational-seal  CARBON SSIC	9-2 伸縮環 Bellows  TEFLON	
9-3 彈簧 Bellows Spring  HASTELLOY-C SUS316	9-4 伸縮環前O環 Bellows Front O-ring  NBR / EPT VITON	9-5 伸縮環墊片 Bellows Packing  NBR / EPT VITON	9-6 伸縮環後O環 Bellows Rear O-ring  NBR / EPT VITON	10 組合式固定環 Fixed-seal  CERAMIC SSIC	10-1 固定環後O環 Fixed-Seal Rear O-ring  NBR / EPT VITON	10-2 固定環側O環 Fixed-Seal Side O-ring  NBR / EPT VITON	11 葉輪 Impeller  FRPP/PVDF	12 葉輪螺絲 Impeller Screw  FRPP/PVDF	12-1 葉輪螺絲O環 Impeller Screw O-ring  NBR / EPT VITON	13 中封蓋 Check Cover  FRPP/PVDF
15 注水蓋 Water Filling Cap  FRPP/PVDF	15-1 注水蓋O環 Water Filling Cap O-ring  NBR / EPT VITON	16 循環管含接頭 Recycle Hose  TEFLON	16-1 循環接頭墊片 Recycle Joint Packing  NBR / EPT VITON	16-2 鐵氟龍管 Teflon Hose  TEFLON	16A 循環接頭 Recycle Joint  PVDF	17 自吸筒 Self-Priming Cover  FRPP/PVDF	17A 自吸筒螺絲 Self-Priming Cover Screw  PVDF / SUS	17A-1 自吸筒螺絲O環 Cover Screw O-ring  NBR / EPT VITON	18 自吸筒墊片 Self-Priming Cover Packing  NBR / EPT VITON	19A 腳架 Base  FRPP

A

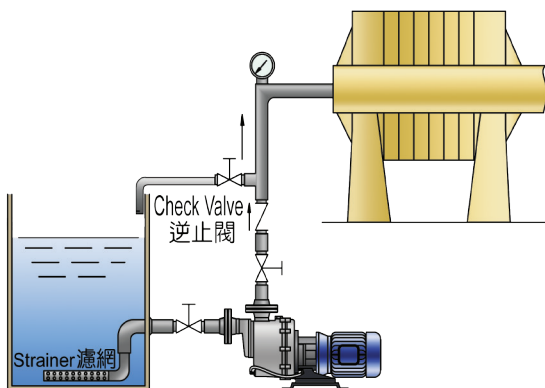


Example A

1. While applied to heat-exchanger, install a pressure gauge at the outlet to make sure no clog inside the pipeline.
2. Install a strainer at the inlet to stop articles or objects entering the pump. It also cut down the bubbles.
3. Install valves at the inlet and outlet for easy maintenance.
4. The diameter of each hole in the strainer should be approximately 5~7mm and the total mesh area of the strainer should be 5~10 times the area of the inlet.
It's better to enlarge the inlet pipeline. For example, enlarged 2-1/2" inlet pipeline could drop the resistance loss.
5. Set an overflow piping at the outlet pipeline and keep constantly opened to allow little overflow

1. 當應用於熱交換器時，於出口加裝壓力錶，以確定管路中有沒有阻塞。
2. 於入口加裝濾網，以阻止外物進入泵浦，也會減少氣泡的出現。
3. 於出入口的管路中加裝閥門，以便維護。
4. 濾網網孔的直徑應為約5~7mm，且濾網孔的面積應為入口管徑之5~10倍，入口管路最好加大管徑，如泵入口為2"，改配2-1/2"入口管，預防吸入量的不足。
5. 出水口配有回流管，正常開啟閥門，少量回流。

B

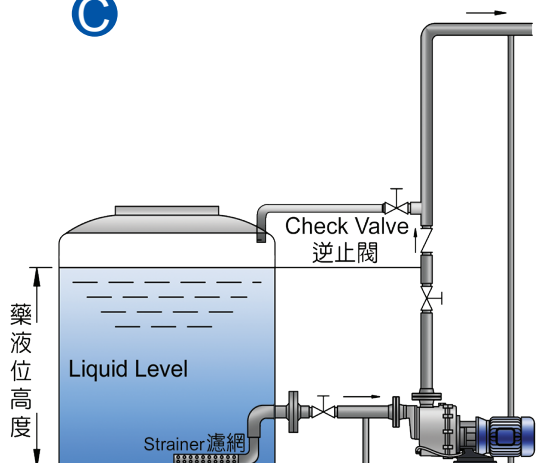


Example B

1. In order to monitor the flow and to detect possible clog of the filter, please set a pressure gauge at the outlet.
2. To eliminate damage caused by dry-running, please install a pressure safety shutoff.
3. Please clean up particles in the pump after operation.
4. Strainer is easy to be clogged. Clean it as usual.
5. The diameter of each hole in the strainer should be approximately 5~7mm and the total mesh area of the strainer should be 5~10 times the area of the inlet.
It's better to enlarge the inlet pipeline. For example, enlarged 2-1/2" inlet pipeline could drop the resistance loss.
6. Install valves at the inlet and outlet for easy maintenance.
7. Set an overflow piping at the outlet pipeline and keep constantly opened to allow little overflow.

1. 為了監視液體流動及偵測過濾機中可能的阻塞，請於出口加裝壓力錶。
2. 請加裝壓力保護斷電器以避免因空轉損壞。
3. 操作完畢，請清除泵浦中的外來物。
4. 注意入口濾網容易受阻塞，應時常清洗。
5. 濾網網孔的直徑應為約5~7mm，且濾網孔的面積應為入口之5~10倍，入口管路最好加大管徑，如泵入口為2"，改配2-1/2"入口管，預防吸入量的不足。
6. 於出入口的管路中加裝閥門，以便維護。
7. 出水口配有回流管，正常開啟閥門，少量回流。

C

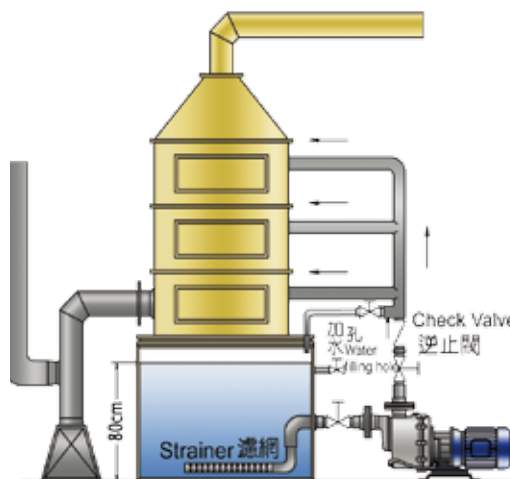


Example C

1. While applied to pump chemicals from the storage tank, please have a valve set at the inlet for the safety and convenience during maintenance.
2. Please monitor the level of the liquid in the tank to avoid dry-running.
3. Without check lid model is recommended.
4. Please install a check valve at the outlet while the height of piping exceeds 8M. It's better to enlarge the inlet pipeline. For example, enlarged 2-1/2" inlet pipeline could drop the resistance loss.
5. Please fasten in-outlet piping perfectly.
6. The motor shield must be applied while the pump is installed outdoors or in harsh conditions.
7. Set an overflow piping at the outlet pipeline and keep constantly opened to allow little overflow

1. 當應用於抽送儲存槽中之化學藥水時，請於入口加裝閥門，以維安全及維護上之便利。
2. 請監視槽內液體高度，以避免空轉。
3. 建議採用無單向閥機型。
4. 當配管高度大於8米時請於出口加裝逆止閥，逆止閥應高於液位以上，入口管路最好加大管徑，如泵入口為2"，改配2-1/2"入口管，以防吸入量的不足。
5. 請將出入口管線固定好。
6. 當泵浦裝於戶外或惡劣環境中，馬達必需加蓋護罩。
7. 出水口配有回流管，正常開啟閥門，少量回流。

D

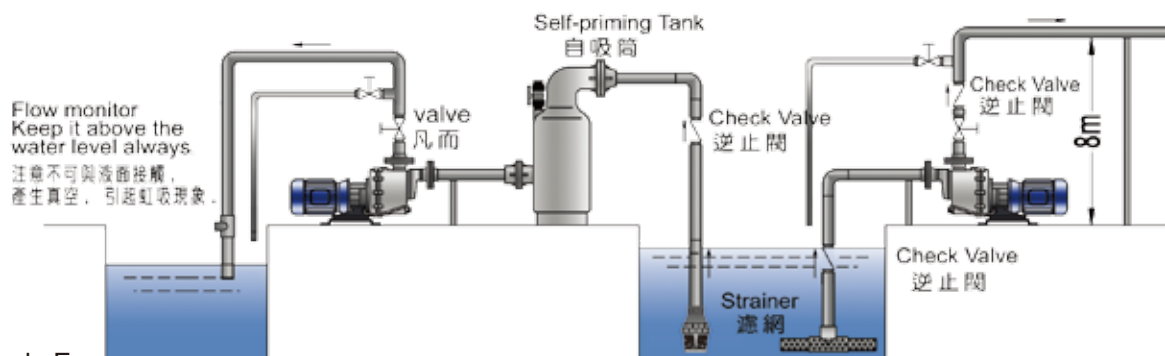


Example D

1. While applied to waste gas treatment tower, the tank should be large enough and the water-level in the tank should exceeds the inlet 80cm.
2. In order to avoid foreign particles clogging the inlet, please lower the inlet and install a strainer. (Mesh diameter approximately 5~7mm and the total mesh area of the strainer should be 5~10 times the area of the inlet.) It's better to enlarge the inlet pipeline. For example, enlarged 2-1/2" inlet pipeline could drop the resistance loss.
3. It should be easy to remove the strainer from the inlet for cleaning.
4. To avoid running out of liquid, please make sure that the water supplying system functions well.
5. To prevent the pump from dry running, please install a safety shutoff.
6. The motor shield must be applied while the pump is installed outdoors or in harsh conditions.
7. Install valves at the inlet and outlet for easy maintenance.
8. Set an overflow piping at the outlet pipeline and keep constantly opened to allow little overflow.

1. 當應用於廢氣塔時，水槽應夠大，且槽中水位應高於入口濾網80公分。
2. 為了避免外物阻塞入口，請降低入口並要裝濾網（網孔孔徑約5~7mm，且濾網孔的面積應為入口管徑之5~10倍）入口管路最好加大管徑，如泵入口為2"，改配2-1/2"入口管，預防吸入量的不足。
3. 入口濾網應易於取下清洗。
4. 請確認供水系統功能良好，以避免無水運轉（加裝自動補水系統）。
5. 請加裝保護斷電器，以防止泵浦空轉。
6. 當泵浦裝於戶外或惡劣環境中，馬達必需加蓋護罩。
7. 於出入口的管路中加裝閥門，以便維護。
8. 出水口配有回流管，正常開啟閥門，少量回流。

E



Example E

1. To stop articles or objects entering the pump, install a foot valve or strainer.
2. To prevent the inlet from sucking in bubble, please keep liquid level at least 30cm above the strainer.
3. Check valve must be installed if the height of piping exceeds 8M.
4. To avoid dry-running, please install a safety shutoff.
5. For the safety of repair, the valve must be installed at the outlet.
6. 3" in/outlet models cannot do self-priming well. Install a self-priming tank to get it.
7. In order to avoid foreign particles clogging the inlet, please lower the inlet and install a strainer. (Mesh diameter approximately 5~7mm and the total mesh area of the strainer should be 5~10 times the area of the inlet.) It's better to enlarge the inlet pipeline. For example, enlarged 2-1/2" inlet pipeline could drop the resistance loss.
8. If the head of the outlet too high or the long transfer distance and the pressure losing or over 1KG we suggest that install the outlet tee hose for backflow to tube. This can avoid the pressure of the backflow and the hot air can be exhausted will diminish the damage.
9. Set an overflow piping at the outlet pipeline and keep constantly opened to allow little overflow.
1. 加裝底閥或濾網，以防止外物進入泵浦。
2. 請保持液位最少高於入口濾網 30cm 以上，以防止吸入氣泡。
3. 當配管高度大於 8 米時，必需加裝逆止閥。
4. 請加裝保護斷電器，以防止泵浦空轉。
5. 為了維修安全，出口必需加裝閥門。
6. 出入口為 3" 之機型無自吸能力，請加裝自吸桶以獲得自吸能力。
7. 為了避免外物阻塞入口，請降低入口並要裝濾網（網孔孔徑約5~7mm，且濾網孔的面積應為入口管徑之5~10倍）。入口管路最好加大管徑，如泵入口為2"，改配2-1/2"入口管，預防吸入量的不足。
8. 出口揚程高或輸送距離較長，壓損超過1kg以上的使用場所建議在原出口加裝三通回流管，來防止反壓及熱氣排放減少損壞。
9. 出水口配有回流管，正常開啟閥門，少量回流。
※如安裝二台泵浦，不能共用入口管路



總公司

昇展實業股份有限公司

台灣省台南市永康區中正南路404巷7號

Tel: 886-6-2534546, 2541601

Fax: 886-6-2534226, 2420509

SUPER GIANT ENTERPRISE CO., LTD.
No. 7, Lane 404, Chung Cheng South Road, Yen
Hang, Yung Kang, Tainan, Taiwan,

Tel: 886-6-2534546, 2541601

Fax: 886-6-2534226, 2420509

E-mail: super@superpump.tw

Website: www.superpump.tw

www.chemicalfilter.com.cn



上海區 塑寶環保機械

江蘇省太倉市沙溪鎮岳王區

鎮北路16號 215400

Tel: 0512-53303388, 53303398

Fax: 0512-53303588

E-mail: taichang@superpump.cn

Website: www.superpump.cn

廣東區 升展機械

廣東省廣州市增城區新塘鎮

民營西二路9號

(遠航科技園B1座二樓)

Tel: 020-82691835, 82602341~3

Fax: 020-82708706

E-mail: singtown@superpump.cn

Website: www.chemicalpump.cn

訂購時請提供下列資料:

1. 藥液條件: 名稱_____/溫度_____
濃度_____/比重_____/黏度_____
2. 需求流量: _____ L/min
3. 需求揚程: _____ M
4. 馬達: 電壓/頻率

While placing your order...

Please kindly provide us the following information.

1. Chemical: Name_____/Concentration_____
Temperature_____/Specific Gravity_____
Viscosity_____
2. Capacity needed: _____ L/min
3. Head needed: _____ M
4. Power: Voltage/Frequency